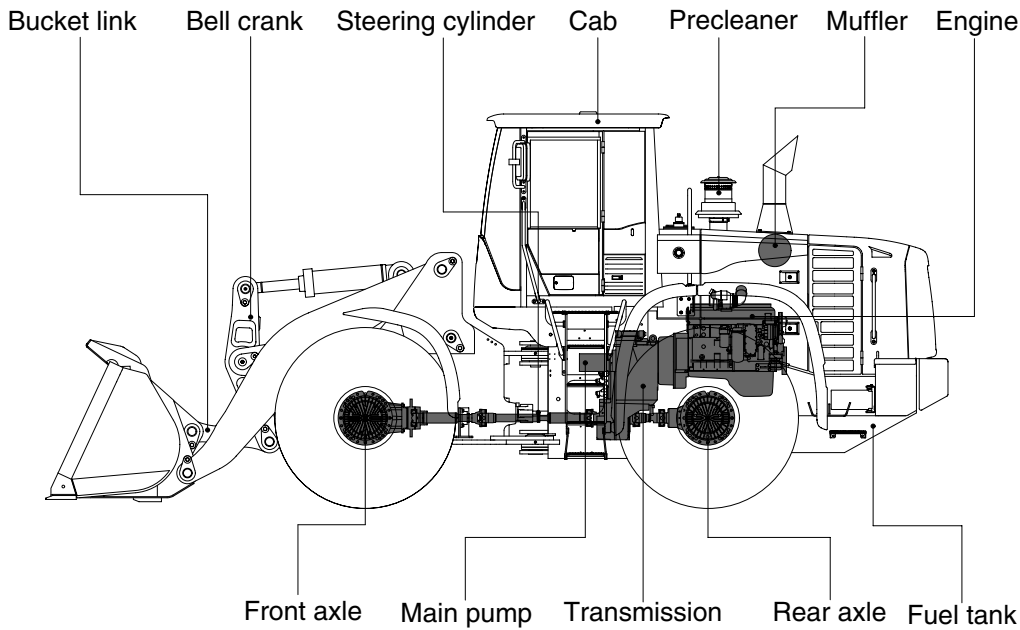
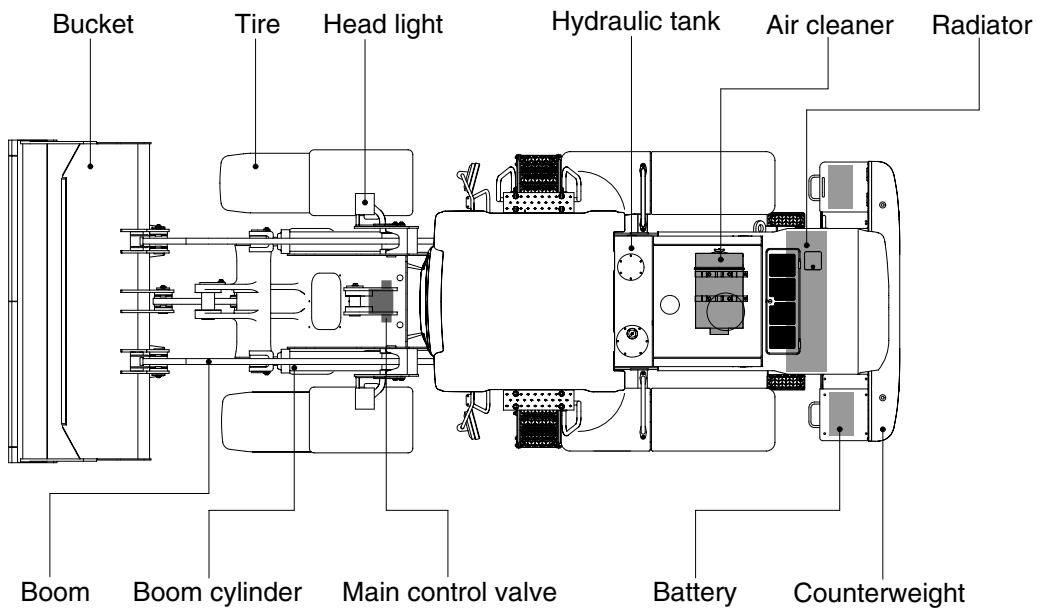


2. SPECIFICATIONS

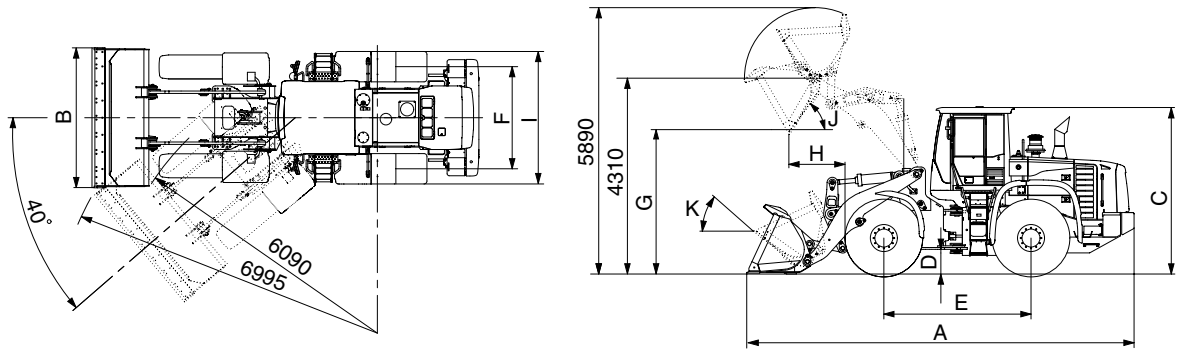
1. MAJOR COMPONENTS



77092SE01

2. SPECIFICATIONS

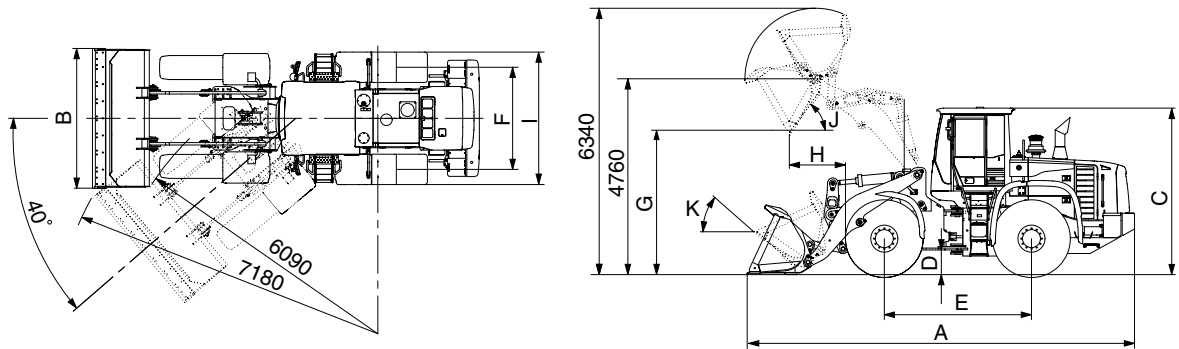
1) WITH BOLT-ON CUTTING EDGE TYPE BUCKET (HL770-9)



77092SE03

Description		Unit	Specification	
Operating weight		kg (lb)	23100 (50930)	
Bucket capacity	Struck	m ³ (yd ³)	3.6 (4.7)	
	Heaped		4.2 (5.5)	
Overall length	A	mm (ft-in)	8700 (28' 7")	
Overall width	B		3100 (10' 2")	
Overall height	C		3560 (11' 8")	
Ground clearance	D		480 (1' 7")	
Wheelbase	E		3500 (11' 6")	
Tread	F		2300 (7' 7")	
Dump clearance at 45°	G		3090 (10' 2")	
Dump reach (full lift)	H		1295 (4' 3")	
Width over tires	I		2975 (9' 9")	
Dump angle	J		degree (°)	48
Roll back angle (carry position)	K			49
Cycle time	Lift (with load)	sec	5.4	
	Dump (with load)		1.3	
	Lower (empty)		2.8	
Maximum travel speed		km/hr (mph)	41.0 (25.5)	
Braking distance		m (ft-in)	12 (39' 4")	
Minimum turning radius (center of outside tire)			6.09 (20' 0")	
Gradeability		degree (°)	30	
Travel speed	Forward	First gear	6.9 (4.3)	
		Second gear	12.3 (7.7)	
		Third gear	26.9 (16.8)	
		Fourth gear	41.0 (25.5)	
	Reverse	First gear	6.9 (4.3)	
		Second gear	12.3 (7.7)	
Third gear		26.9 (16.8)		

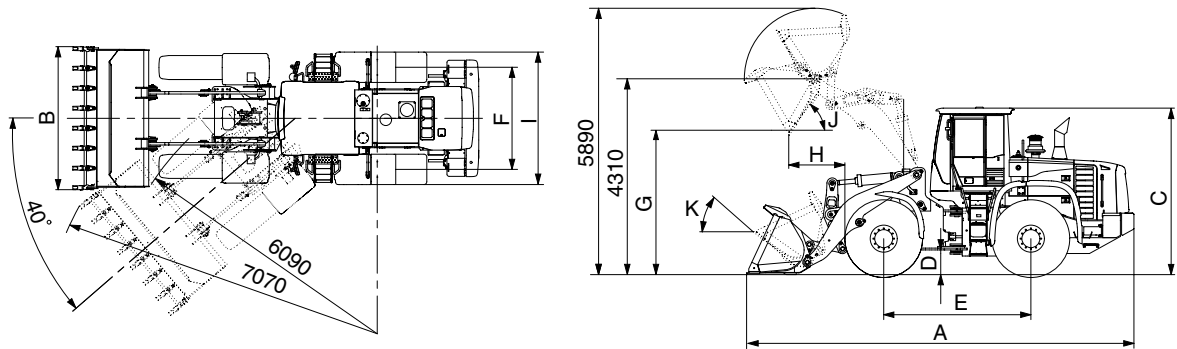
WITH BOLT-ON CUTTING EDGE TYPE BUCKET (HL770XTD-9)



77092SE03-1

Description		Unit	Specification	
Operating weight		kg (lb)	23850 (52580)	
Bucket capacity	Struck	m ³ (yd ³)	3.6 (4.7)	
	Heaped		4.2 (5.5)	
Overall length	A	mm (ft-in)	9175 (30' 1")	
Overall width	B		3100 (10' 2")	
Overall height	C		3560 (11' 8")	
Ground clearance	D		480 (1' 7")	
Wheelbase	E		3500 (11' 6")	
Tread	F		2300 (7' 7")	
Dump clearance at 45°	G		3540 (11' 7")	
Dump reach (full lift)	H		1295 (4' 3")	
Width over tires	I		2975 (9' 9")	
Dump angle	J		degree (°)	48
Roll back angle (carry position)	K			50
Cycle time	Lift (with load)	sec	5.4	
	Dump (with load)		1.3	
	Lower (empty)		2.8	
Maximum travel speed		km/hr (mph)	41.0 (25.5)	
Braking distance		m (ft-in)	12 (39' 4")	
Minimum turning radius (center of outside tire)			6.09 (20' 0")	
Gradeability		degree (°)	30	
Travel speed	Forward	First gear	6.9 (4.3)	
		Second gear	12.3 (7.7)	
		Third gear	26.9 (16.8)	
	Reverse	Fourth gear	41.0 (25.5)	
		First gear	6.9 (4.3)	
		Second gear	12.3 (7.7)	
		Third gear	26.9 (16.8)	

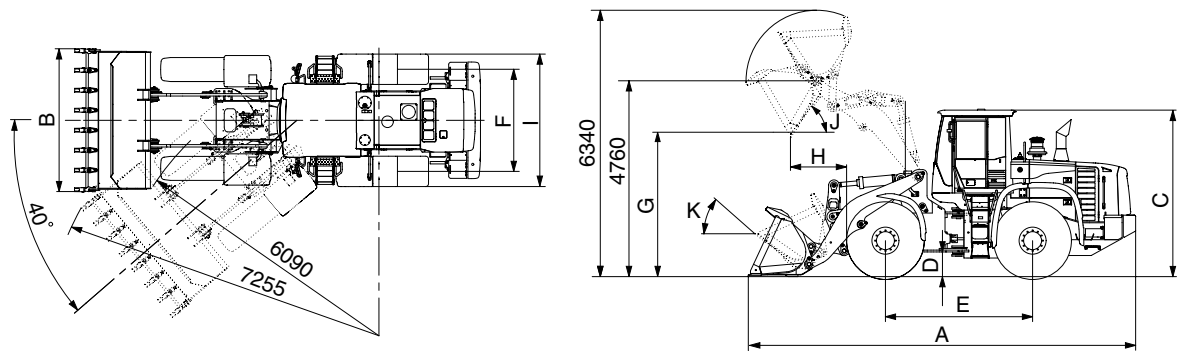
2) WITH TOOTH TYPE BUCKET (HL770-9)



77092SE04

Description		Unit	Specification	
Operating weight		kg (lb)	23100 (50930)	
Bucket capacity	Struck	m ³ (yd ³)	3.4 (4.4)	
	Heaped		4.0 (5.2)	
Overall length	A	mm (ft-in)	8820 (28' 11")	
Overall width	B		3150 (10' 4")	
Overall height	C		3560 (11' 8")	
Ground clearance	D		480 (1' 7")	
Wheelbase	E		3500 (11' 6")	
Tread	F		2300 (7' 7")	
Dump clearance at 45°	G		2965 (9' 9")	
Dump reach (full lift)	H		1380 (4' 6")	
Width over tires	I		2975 (9' 9")	
Dump angle	J		degree (°)	48
Roll back angle (carry position)	K			49
Cycle time	Lift (with load)	sec	5.4	
	Dump (with load)		1.3	
	Lower (empty)		2.8	
Maximum travel speed		km/hr (mph)	41.0 (25.5)	
Braking distance		m (ft-in)	12 (39' 4")	
Minimum turning radius (center of outside tire)			6.09 (20' 0")	
Gradeability		degree (°)	30	
Travel speed	Forward	First gear	6.9 (4.3)	
		Second gear	12.3 (7.7)	
		Third gear	26.9 (16.8)	
	Reverse	First gear	41.0 (25.5)	
		Second gear	6.9 (4.3)	
		Third gear	12.3 (7.7)	
		km/hr (mph)	26.9 (16.8)	

WITH TOOTH TYPE BUCKET (HL770XTD-9)



77092SE04-1

Description		Unit	Specification	
Operating weight		kg (lb)	23850 (52580)	
Bucket capacity	Struck	m ³ (yd ³)	3.4 (4.4)	
	Heaped		4.0 (5.2)	
Overall length	A	mm (ft-in)	9320 (30' 7")	
Overall width	B		3150 (10' 4")	
Overall height	C		3560 (11' 8")	
Ground clearance	D		480 (1' 7")	
Wheelbase	E		3500 (11' 6")	
Tread	F		2300 (7' 7")	
Dump clearance at 45°	G		3415 (11' 2")	
Dump reach (full lift)	H		1380 (4' 6")	
Width over tires	I		2975 (9' 9")	
Dump angle	J		degree (°)	48
Roll back angle (carry position)	K			50
Cycle time	Lift (with load)	sec	5.4	
	Dump (with load)		1.3	
	Lower (empty)		2.8	
Maximum travel speed		km/hr (mph)	41.0 (25.5)	
Braking distance		m (ft-in)	12 (39' 4")	
Minimum turning radius (center of outside tire)			6.09 (20' 0")	
Gradeability		degree (°)	30	
Travel speed	Forward	First gear	6.9 (4.3)	
		Second gear	12.3 (7.7)	
		Third gear	26.9 (16.8)	
		Fourth gear	41.0 (25.5)	
	Reverse	First gear	6.9 (4.3)	
		Second gear	12.3 (7.7)	
Third gear		26.9 (16.8)		

3. WEIGHT

Item		kg	lb
Front frame assembly		2154	4750
Rear frame assembly		2417	5330
Front fender (LH & RH)		48	106
Counterweight		1300	2870
Additional counterweight (HL770XTD-9)		490	1080
Cab assembly		1050	2320
Engine assembly		738	1630
Transmission assembly		753	1660
Drive shaft (front)		37	82
Drive shaft (center)		37	82
Drive shaft (rear)		21	46
Front axle (include differential)		1150	2540
Rear axle (include differential)		1050	2310
Tire (26.5-25 20PR, L3)		394	870
Hydraulic tank assembly		306	670
Fuel tank assembly		440	970
Main pump assembly		80	176
Fan & brake pump assembly		7	15
Main control valve (3 spool)		75	165
Flow amplifier		29	64
Boom assembly	HL770-9	1610	3550
	HL770XTD-9	1820	4010
Bell crank assembly		460	1010
Bucket link		73	160
4.2 m ³ bucket, with bolt on cutting edge		2160	4760
4.0 m ³ bucket, with tooth		2070	4560
Boom cylinder assembly		225	496
Bucket cylinder assembly		235	518
Steering cylinder assembly		44	97
Seat		40	88
Battery		55	121

4. SPECIFICATION FOR MAJOR COMPONENTS

1) ENGINE

Item	Specification
Model	Cummins QSL / HYUNDAI HE8.9
Type	4-cycle turbocharged, charge air cooled diesel engine
Control type	Electronic control
Cooling method	Water cooling
Number of cylinders and arrangement	6 cylinders, in-line
Firing order	1-5-3-6-2-4
Combustion chamber type	Direct injection type
Cylinder bore × stroke	114 × 145 mm(4.49" × 5.71")
Piston displacement	8900cc (543 cu in)
Compression ratio	17.8 : 1
Rated gross horse power	284 ps at 2000 rpm
Maximum gross torque at 1400rpm	148 kgf · m (1070 lbf · ft)
Engine oil quantity	23 ℓ (6.1 U.S. gal)
Wet weight	738 kg (1627 lb)
High idling speed	2030 ± 50 rpm
Low idling speed	800 ± 50 rpm
Rated fuel consumption	178 g/ps · hr
Starting motor	Nippondenso (24 V - 7.5kW)
Alternator	Delco Remy 22SI (24 V - 70Amp)
Battery	2 × 12V × 200Ah

2) MAIN PUMP

Item	Specification	
	Steering	Loader
Type	Variable tandem piston pump	
Capacity	110 cc/rev	61 cc/rev
Maximum operating pressure	280 kgf/cm ² (3980 psi)	
Rated oil quantity	220 l /min (58.1 U.S.gpm)	122 l /min (32.2 U.S.gpm)
Rated speed	2000 rpm	

3) FAN + BRAKE PUMP

Item	Specification	
	Fan	Brake
Type	Fixed displacement tandem gear pump	
Capacity	22.4 cc/rev	11.9 cc/rev
Maximum operating pressure	120 kgf/cm ² (1710 psi)	150 kgf/cm ² (2130 psi)
Rated oil quantity	44.8 l /min (11.8 U.S.gpm)	23.8 l /min (6.3 U.S.gpm)
Rated speed	2000 rpm	

4) MAIN CONTROL VALVE

Item	Specification
Type	2 spool
Operating method	Hydraulic pilot assist
Main relief valve pressure	280 kgf/cm ² (3980 psi)
Overload relief valve pressure	340 kgf/cm ² (4840 psi)
Overload relief valve pressure (dump)	310 kgf/cm ² (4410 psi)

5) REMOTE CONTROL VALVE

Item	Specification	
Type	Pressure reducing type	
Operating pressure	Minimum	5 kgf/cm ² (71 psi)
	Maximum	30 kgf/cm ² (427 psi)
Single operation angle	degree	17

6) CYLINDER

Item		Specification
Boom cylinder	Bore dia × Rod dia × Stroke	∅ 160 × ∅ 95 × 765 mm
Bucket cylinder	Bore dia × Rod dia × Stroke	∅ 180 × ∅ 95 × 570 mm
Steering cylinder	Bore dia × Rod dia × Stroke	∅ 95 × ∅ 50 × 480 mm

7) DYNAMIC POWER TRANSMISSION DEVICES

Item		Specification	
Transmission	Model	ZF 4WG260	
	Type	Converter	Single-stage, single-phase
		Transmission	Full-automatic power shift
	Converter stall ratio	2.09 : 1	
	Gear shift	Forward fourth gear, reverse third gear	
	Control	Electrical single lever type, kick-down system Automatic kick down from 2nd to 1st gear FNR switch on joystick lever (option)	
	Pump rated flow	135 ℓ /min (35.7 U.S.gpm) at 2000 rpm	
Axle	Drive devices	4-wheel drive	
	Front	Front fixed location	
	Rear	Oscillation ± 13° of center pin-loaded	
Wheels	Tires	26.5-25, 20PR (L3)	
Brakes	Travel	Four-wheel, wet-disc type, full hydraulic	
	Parking	Spring applied, hydraulic released brake	
Steering	Type	Full hydraulic, articulated	
	Steering angle	40° to both right and left angle, respectively	